

# KINGS COUNTY AGRICULTURAL PRESERVES 2009 Williamson Act & Farmland Security Zone Properties

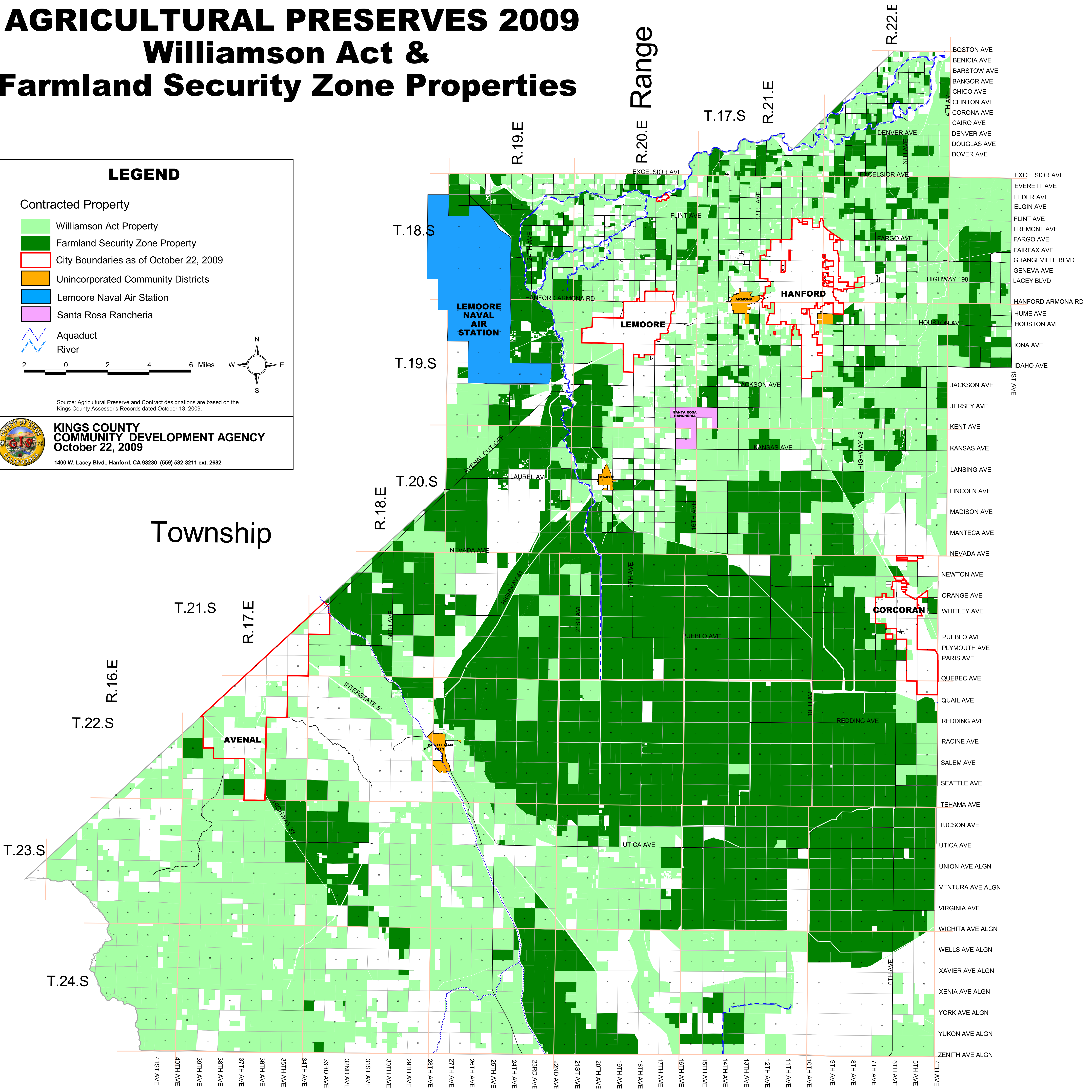
**LEGEND**

- Contracted Property
  - Williamson Act Property
  - Farmland Security Zone Property
- City Boundaries as of October 22, 2009
- Unincorporated Community Districts
- Lemoore Naval Air Station
- Santa Rosa Rancheria
- Aqueduct
- River

Source: Agricultural Preserve and Contract designations are based on the Kings County Assessor's Records dated October 13, 2009.

**KINGS COUNTY  
COMMUNITY DEVELOPMENT AGENCY  
October 22, 2009**

1400 W. Lacey Blvd., Hanford, CA 93230 (559) 582-3211 ext. 2682



Township

- BOSTON AVE
- BENICIA AVE
- BARSTOW AVE
- BANGOR AVE
- CHICO AVE
- CLINTON AVE
- CORONA AVE
- CAIRO AVE
- DENVER AVE
- DENVER AVE
- DOUGLAS AVE
- DOVER AVE
- EXCELSIOR AVE
- EXCELSIOR AVE
- EVERETT AVE
- ELDER AVE
- ELGIN AVE
- FLINT AVE
- FREMONT AVE
- FARGO AVE
- FAIRFAX AVE
- GRANGEVILLE BLVD
- GENEVA AVE
- LACEY BLVD
- HANFORD ARMONA RD
- HUME AVE
- HOUSTON AVE
- IONA AVE
- IDAHO AVE
- JACKSON AVE
- JERSEY AVE
- KENT AVE
- KANSAS AVE
- LANSING AVE
- LINCOLN AVE
- MADISON AVE
- MANTECA AVE
- NEVADA AVE
- NEVADA AVE
- NEWTON AVE
- ORANGE AVE
- WHITLEY AVE
- PUEBLO AVE
- PLYMOUTH AVE
- PARIS AVE
- QUEBEC AVE
- QUAIL AVE
- REDDING AVE
- RACINE AVE
- SALEM AVE
- SEATTLE AVE
- TEHAMA AVE
- TUCSON AVE
- UTICA AVE
- UNION AVE ALGN
- VENTURA AVE ALGN
- VIRGINIA AVE
- WICHITA AVE ALGN
- WELLS AVE ALGN
- XAVIER AVE ALGN
- XENIA AVE ALGN
- YORK AVE ALGN
- YUKON AVE ALGN
- ZENITH AVE ALGN