



KINGS COUNTY PLANNING AGENCY

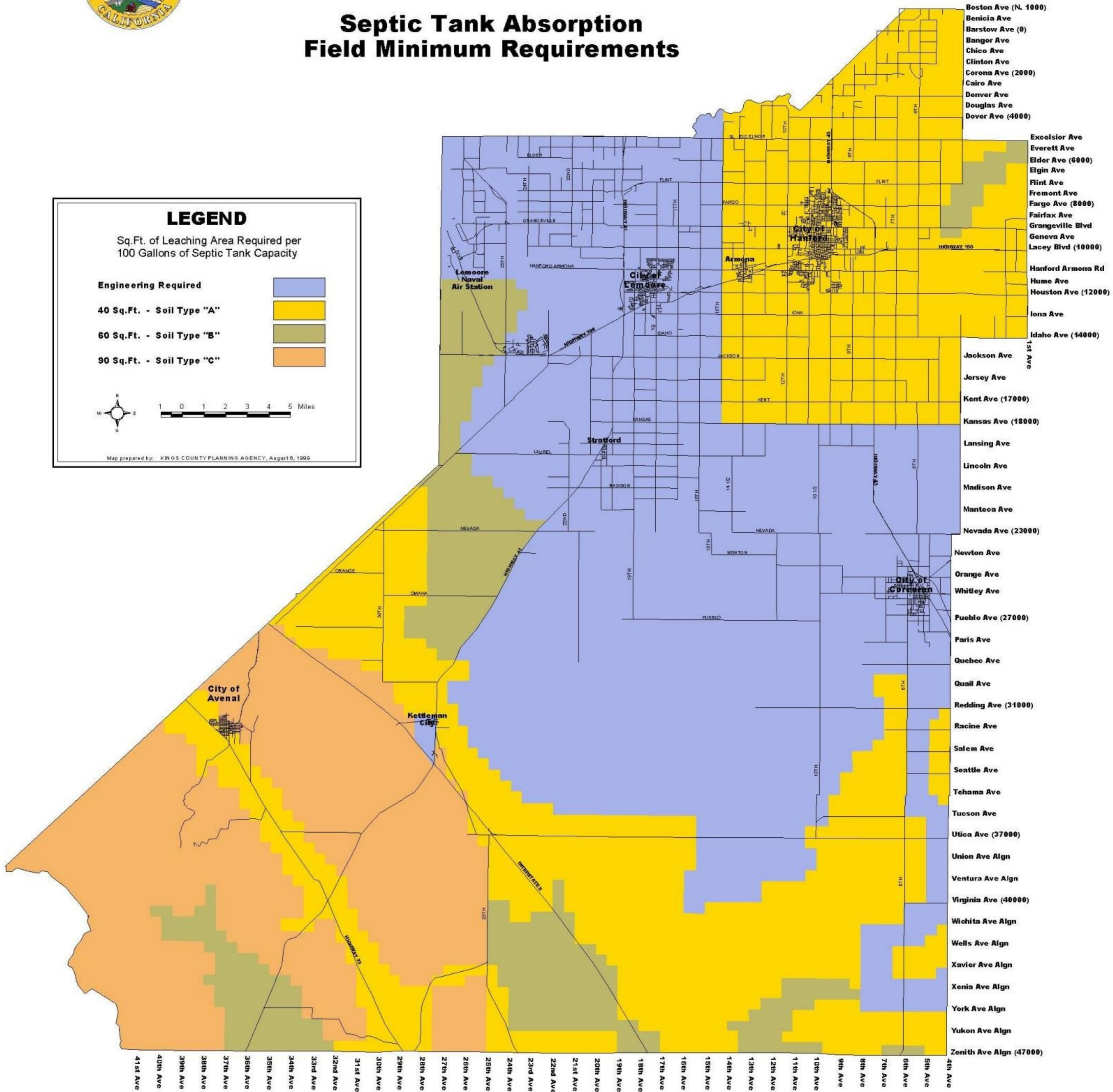
Septic Tank Absorption Field Minimum Requirements

LEGEND

Sq.Ft. of Leaching Area Required per
100 Gallons of Septic Tank Capacity

Engineering Required	
40 Sq.Ft. - Soil Type "A"	
60 Sq.Ft. - Soil Type "B"	
90 Sq.Ft. - Soil Type "C"	

Map prepared by: KINGS COUNTY PLANNING AGENCY, August 6, 1999



- Boston Ave (N. 1000)
- Benicia Ave
- Barstow Ave (0)
- Bangor Ave
- Chico Ave
- Clinton Ave
- Corona Ave (2000)
- Cairo Ave
- Denver Ave
- Douglas Ave
- Dover Ave (4000)
- Excelsior Ave
- Everett Ave
- Elder Ave (6000)
- Elgin Ave
- Flint Ave
- Fremont Ave
- Fargo Ave (8000)
- Fairfax Ave
- Grangeville Blvd
- Geneva Ave
- Lacey Blvd (10000)
- Hanford Armona Rd
- Hume Ave
- Houston Ave (12000)
- Iona Ave
- Idaho Ave (14000)
- Jackson Ave
- Jersey Ave
- Kent Ave (17000)
- Kansas Ave (18000)
- Lansing Ave
- Lincoln Ave
- Madison Ave
- Manteca Ave
- Nevada Ave (23000)
- Newton Ave
- Orange Ave
- Whitley Ave
- Pueblo Ave (27000)
- Paris Ave
- Quebec Ave
- Quail Ave
- Redding Ave (31000)
- Racine Ave
- Salem Ave
- Seattle Ave
- Tehama Ave
- Tucson Ave
- Utica Ave (37000)
- Union Ave Align
- Ventura Ave Align
- Virginia Ave (40000)
- Wichita Ave Align
- Wells Ave Align
- Xavier Ave Align
- Xenia Ave Align
- York Ave Align
- Yukon Ave Align
- Zenith Ave Align (47000)

- 41st Ave
- 40th Ave
- 39th Ave
- 38th Ave
- 37th Ave
- 36th Ave
- 35th Ave
- 34th Ave
- 33rd Ave
- 32nd Ave
- 31st Ave
- 30th Ave
- 29th Ave
- 28th Ave
- 27th Ave
- 26th Ave
- 25th Ave
- 24th Ave
- 23rd Ave
- 22nd Ave
- 21st Ave
- 20th Ave
- 19th Ave
- 18th Ave
- 17th Ave
- 16th Ave
- 15th Ave
- 14th Ave
- 13th Ave
- 12th Ave
- 11th Ave
- 10th Ave
- 9th Ave
- 8th Ave
- 7th Ave
- 6th Ave
- 5th Ave
- 4th Ave